

THE ELDER

a spacious 3 bedroomed home

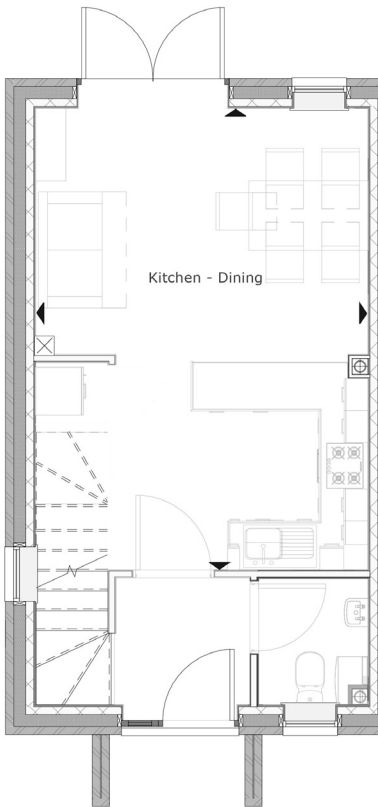


The Elder is a spacious three-bedroom townhouse. Along with parking provision, this property benefits from an open plan kitchen / diner with access to the rear garden as well as storage area. The first floor consists of a living room with Juliet balcony. A WC and bedroom three is also located on this level.

The second floor has the master bedroom, further bedroom and a family bathroom.

THE ELDER

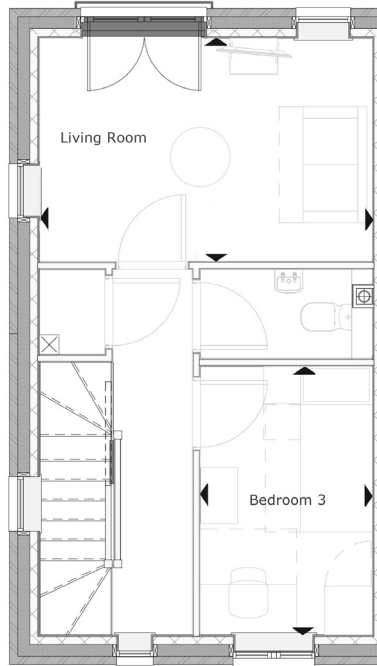
3 BEDROOM HOUSE



Ground Floor

Room dimensions

Kitchen/Dining* 4.21m x 5.80m
13'9" x 19'0"

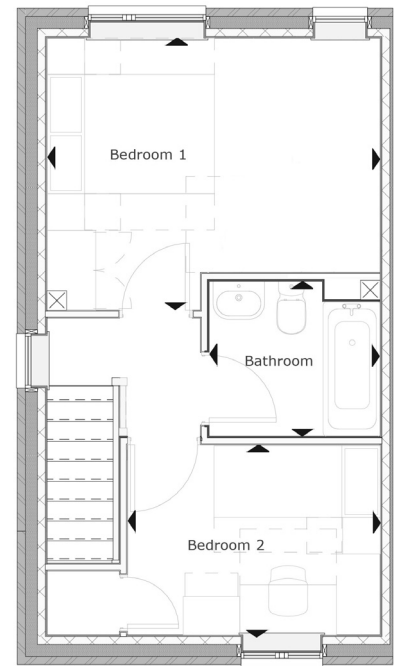


First Floor

Room dimensions

Living* 4.17m x 4.02m
13'8" x 13'2"

Bedroom 3 2.15m x 3.37m
7'0" x 11'0"



Second Floor

Room dimensions

Bedroom 1 4.20m x 3.00m
13'9" x 9'10"

Bedroom 2 3.16m x 2.38m
10'4" x 7'9"

Specifications: This information is for guidance only and does not form any part of a contract or constitute a warranty.

Illustrations are of typical elevations and may vary. Floor plan are not drawn to scale.

Room dimensions are subject to a +/- 50mm(2") tolerance and are based on a maximum dimensions in each room.

*Please consult your sales advisor on site for specific elevations, room dimensions and external finishes. *TBC*